



General specifications

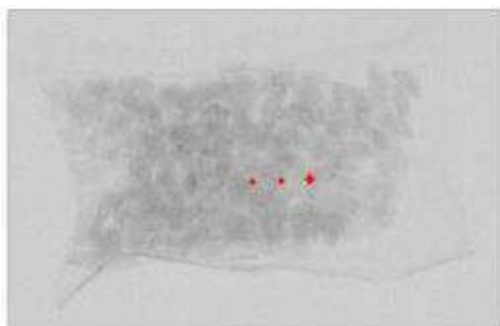
PHYSICAL SPECIFICATIONS

X-Ray Tube	350W/ 480W
Inspection Width	650mm
Inspection Height	500mm
Best Inspection	Stainless Steel Ball Φ 0.5mm
Sensitivity	Glass/Ceramic Ball Φ 1.5mm
Conveyor Speed	10-40m/min
Maximum carton size that can be inspected	1200x650x500mm (LxWxH)
Max load	160kg
X-Ray Leakage	<1 μ Sv/h (CE Standard)
IP Rate	IP66 (Under Belt)/ IP69K
Working Environment	Temperature: -5~40C Humidity: 40-60%, No Dew
Cooling Method	Industrial Fan
Rejecter Mode	Sound and Light Alarm, Belt Stops (Rejecter Optional)
AI software	Pro version
Power Supply	1.5kW
Surface Treatment	Carbon Steel



Product highlights

- Specially designed to detect metal and non-metal contaminants in large cartons and bulk packages, including multiple products simultaneously, with a maximum weight of up to 100 kg (depending on the product). Suitable for industries such as garments, footwear, handbags, food, and agricultural products—even when the products contain metal accessories or are packaged in aluminum.
- Maximum carton size that can be inspected: **1200x650x500mm(LxWxH)**
- Movable touch screen
- Special structure design for big package (carton, box, bag), high price-performance ratio
- Best solution for metal contaminant inspection in big aluminum packages
- Metal component counting function in garments, shoes and bags



Images

Product packaging:



Dimensions

