



General specifications

PHYSICAL SPECIFICATIONS	
Tunnel width	400mm
Tunnel Height	160mm
Machine Size	LxWxH: 1300x1083x2000mm
Machine Weight	380kg
Material	Sus304/304L
Material	Food grade PU
Belt width	400mm
Height to ground	800±50mm
Speed	10~60m/min
Weighing Range	5kg
Voltage	40~80kv
X -ray current	3mA
X -ray power	210W
FE, NON-FE/SUS etc. metal ball (Φ)	0.3mm
FE, NON-FE/SUS etc. metal ball strip	0.3x2mm
Glass ball (Φ)	0.8 mm
Ceramic ball (Φ)	0.8 mm
Algorithm support	Foreign body detection
Protection level	Transmission part : IP67 Other areas : IP56
Tested product form	Packaging, bulk materials
Rejection	Flip+bin (option)
Alarm	Ring and light
Display	21.5 touch screen
Windows 11 system	English
Detection software system	Detection software system
Cooling method	Industrial air conditioner
Protection method	4 layers of protective curtains
Radiation safety	≤1μSv/h
Voltage	AC220V-240V,50/60HZ 1phase
Temperature	-10~40°C
Working humidity	30~98%RH
Included interfaces	Ethernet, USB; support MES docking



Product highlights

Smart Learning

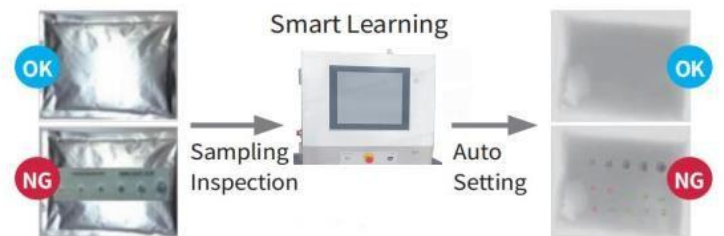
Simple and intuitive settings.
With the "Smart Learning" function, basic sensitivity and X-ray power level can be set with sampling inspection of the product.

Real Time Report

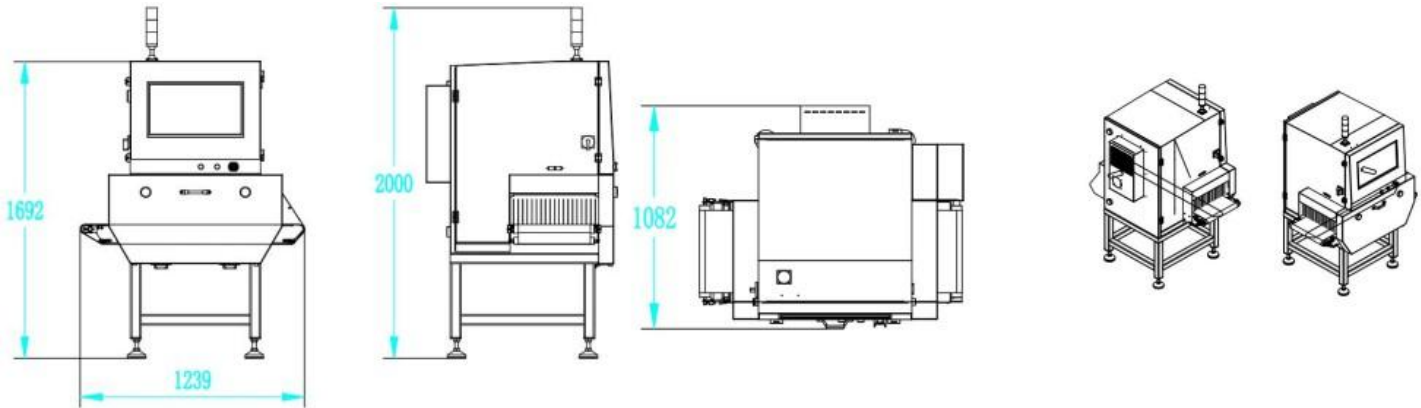
Using an Ethernet connection to your office desktop, a real time report can be sent continuously to your computer for instant and constant monitoring of the quality control inspection.

Online Support – Internet

Engineer can access your machine remotely via Internet and directly troubleshoot to assist with problem situations. Any such access be enabled by the customer.



Dimensions



Rejector

