

General specifications

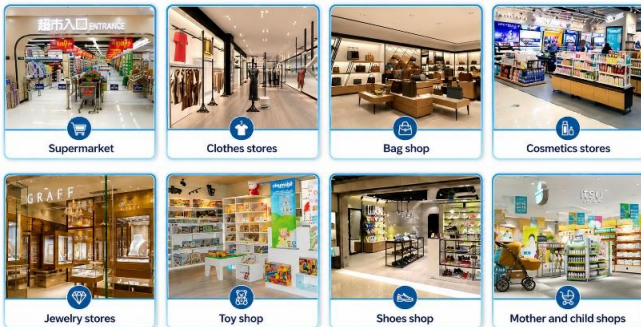


PHYSICAL SPECIFICATIONS

Material	Acrylic antenna and metal cover box
Detection Range	Up To 1.8 m (Depending On Tag/Label Type And Installation Environment) Up To 2.5 m (Depending On Hard Tag, Super Tag Type And Installation Environment)
Center Frequency	58khz
Antenna size&Weight	156.5*39.5*14.5cm(Acrylic:2cm)
Packing Size	1pcs/ctn, 160*45*16.5cm, 2.35kg/master, 23kg/slave
Working Mode	Master+slave, slave+master+slave, slave+master+slave+master, master+master+master
Usage	For anti shop lifting
Application	Shopping malls and supermarket
Advantage	High-end quality with favorable price
Packing Unit	1pcs / ctn
Solution for stores	1m door: 1 master 2m door: 1 set 5m door: 2 sets
Dubugging method	Manual bebugging+Mobile APP debugging+Mobile APP debugging
Precautions	Avoid metal or big electronic devices near antenna
Input	AC 110-240V 50/60hz
Rated Power	≤30W
Product Highlights	The product durability is over 10 years, featuring up to 99% false alarm prevention. It supports remote calibration via the internet and remote management, making it highly suitable for multi-store retail chains. Premium-quality components with a product lifespan of over 15 years. Features up to 99% false alarm prevention and operates stably in environments with heavy metal interference, LED lighting, and electrical noise. Supports remote tuning via the internet and remote management, making it highly suitable for multi-store retail chains.

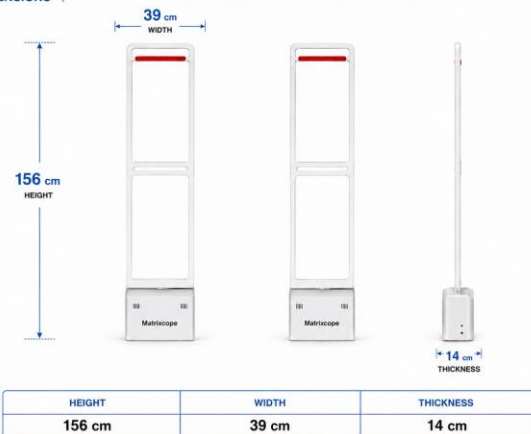


Application



Matrixcope

DIMENSIONS



* All dimensions are approximate.

