



General specifications

PHYSICAL SPECIFICATIONS

Tunnel width	600mm
Tunnel Height	300mm
Machine Size	LxWxH: 2740x1490x2000mm <i>Including alarm light and pusher rejection</i>
Machine Weight	450kg
Material	SUS304
Material	Food grade PU
Belt width	600mm
Height to ground	850±50mm (<i>Customized</i>)
Speed	10~40m/min
Weighing Range	30kg
Voltage	40~80kv <i>(Adjustable , Total <210W)</i>
X-ray current	200-5000µA
X-ray power	210/350W
Fe/SUS etc. metal ball (Φ)	0.3mm
Fe/SUS etc. metal ball strip	0.4x2mm
Glass ball (Φ)	1.0 mm
Ceramic ball (Φ)	1.0 mm
Algorithm support	Foreign body detection
Protection level	Transmission part : IP66 Other areas : IP54
Tested product form	Packaging, bulk materials
Rejection	Stop and alarm <i>(reject and SS304 bin optional)</i>
Alarm	Ring and light
Display	21.5 touch screen <i>(Resolution 1920*1080)</i>
cooling method	Industrial air conditioner <i>(Thermostatic)</i>
Protection method	4 layers of protective curtains
Radiation safety	≤1µSv/h
Voltage	AC110V/220V-240V,50/60HZ 1phase AC400V, 3 phase ±10%
Temperature	-10~40°C
Working humidity	30~90%RH
Included interfaces	Ethernet, USB; support MES docking

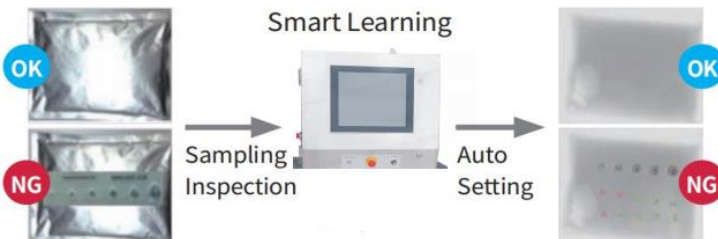


Product highlights

Smart Learning

Simple and intuitive settings.

With the "Smart Learning" function, basic sensitivity and X-ray power level can be set with sampling inspection of the product.

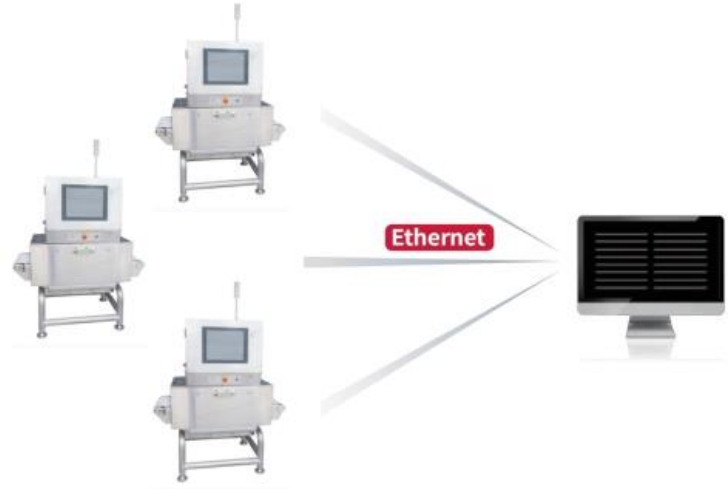


Real Time Report

Using an Ethernet connection to your office desktop, a real time report can be sent continuously to your computer for instant and constant monitoring of the quality control inspection.

Online Support – Internet

Engineer can access your machine remotely via Internet and directly troubleshoot to assist with problem situations. Any such access can only be enabled by the customer.



Drawings

