



General specifications

PHYSICAL SPECIFICATIONS

X-Ray Tube	350W, 30-80KV (Beryllium Window)
Detector	TDI Detector
Aperture Size	Width: 460mm Height: 260mm
Working Speed	5-40m/min
Best Inspection Ability	Stainless Steel Ball: $\Phi 0.1\text{mm}$ Stainless Steel Wire: $\Phi 0.04 \times 5\text{ mm}$ Fish, chicken, and pork bones: $\Phi 0.2 \times 5\text{mm}$ Ceramic: $\Phi 0.6\text{mm}$ Glass: $\Phi 0.6\text{mm}$
Operation	17-inch colored touch screen, Windows System. 50" HD 4K External Monitor (Optional)
X-Ray Leakage	< $1\mu\text{Sv}$ per hour
Protection	Protective Cabin
Cooling method	Industrial air conditioner
Support data interface	LAN Port, USB Port
Power Supply	AC220V $\pm 10\%$ 50Hz/60Hz, 1.5KVA Max
Rejector	Stop and Alarm
Waterproof Level	IP66
Operating Requirement	Temperature: $-10^{\circ}\text{C} \sim 40^{\circ}\text{C}$, Humidity: 30% ~ 95%
Main Structure	SUS304 Stainless Steel



Remarks : The technical parameter above is the result of sensitivity by inspecting only the test sample on the belt. The actual sensitivity would be affected according to the products being inspected

Product highlights

Highly Efficient

- Specially for fish bone inspection products, accuracy up to $\Phi 0.2 \times 5\text{mm}$. Safe and Reliable
- X-Ray leakage is less than $1\mu\text{Sv}/\text{hour}$, complying with FDA and CE standards.
- Radiation less than 1 Gy, very safe for food.
- We designed a wholly shielded structure to prevent X-ray leakage accidents

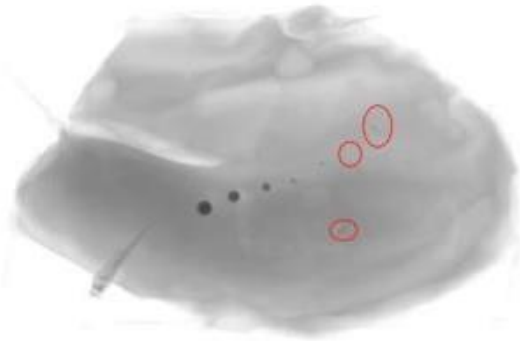


User Friendly

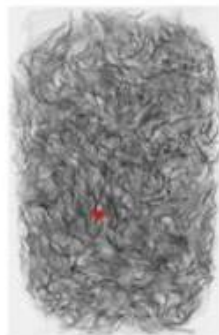
- Auto-analysis on the inspected products, simple to set up inspecting parameters.
- 17 inches full-color touch screen, easy to use.
- Auto-save inspection images, easy to track and control.
- Data can be stored for up to 1 year, exported in a .xls file, and saved to a USB flash disk.
- Multiple Languages available.



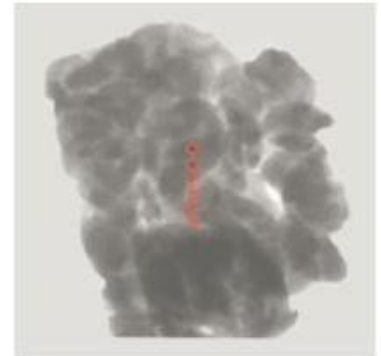
Detected Foreign Objects Examples



Sliced Bacon with 0.4mm
Stainless Steel Test Card



Noodles with 2mmx3mm
glass splinters



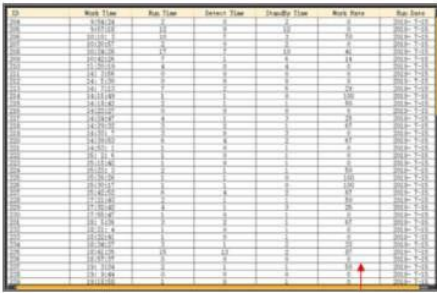
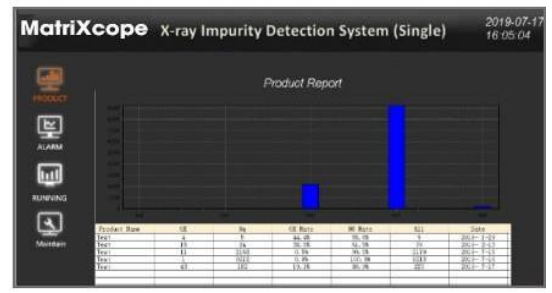
IQF Shrimp in 1KG with
0.6mm SUS ball



Data Storage and Remote Control

Data Exportable

- Can provide reports of production information such as product tests, operation tests, maintenance logs, and alert logs into spreadsheets which can all be customizable.
- Can save all product images for post-tracking management.
- Data analysis and information on the production and operation of products can be seen on various charts.

Measurement

