



General specifications

Physical Specifications

Weighing Extent()	10-25kg
Operation Speed (bags/h)	140-180
Accuracy	±0.1-0.2 %
Power, Power Consumption	AC 380V 50Hz、 5KW
Air, air expenditure	0.4~0.6MPa 20m3/h
0.4~0.6MPa 20m3/h	2950×1380×3000

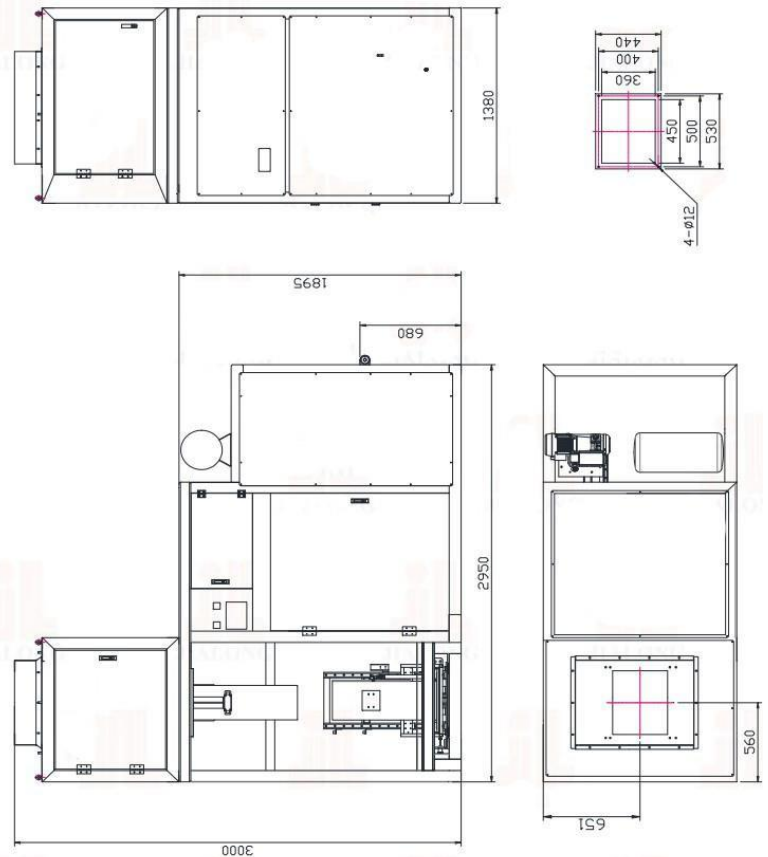
Molding size packaging range (mm)

Height	280≤H≤550
Width	200≤A≤340
Thickness	140≤B≤240

*Applications

Suitable for brick-shaped vacuum quantitative packaging of granules in refined rice, food, grains, sugar and other industries

Equipment dimensions drawing



Functions and Features

Suitable for the cubic shape vacuum packaging of cashew nut, peanut kernel, grain and other industries.

- Gravity feeding and vibration feeding to ensure material particle integrity and stable performance.
- The use of bucket measurement, high measurement accuracy, fast weighing speed.
- The two-sided vacuum bag replaces the traditional organ bag for six-sided vacuum packaging, which greatly reduces the packaging cost.
- Adopt Omron touch screen, Omron PLC centralized control, intelligent control weighing, filling, six-sided shaping, Vacuum, heat sealing, unloading, conveying the whole process, real-time tracking system status, man-machine interface friendly, easy to operate.
- Mold replacement, simple and convenient.
- The operation space is reasonable, and the right discharge conveyor realizes seamless docking with the subsequent conveyor belt.

