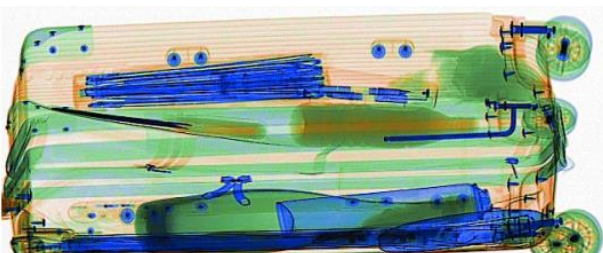
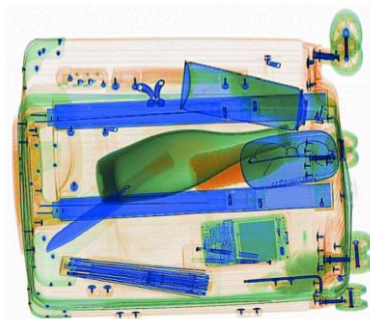




### Product highlights

- \* Dual view technology with images from two angles
- \* Radiation safe
- \* High resolution, high penetration and good image quality
- \* Multilingual operation
- \* Automatic built in test and self diagnosis
- \* High load-bearing capacity
- \* Threat alert and material classification
- \* Energy saving design
- \* One key turn off with patent
- \* Drugs and explosives detection.



### General specifications

#### Physical Specifications

|                               |  |
|-------------------------------|--|
| Tunnel size                   | 660(W)*501(H) mm   |
| 660(W)*501(H) mm              | 740 kg   |
| Unit size                     | 2456(L)*1348(W)*1331(H) mm   |
| after packed on wooden pallet | Gross weight: 900  |
|                               | Packing size: #1: 262*147*156cm  |
|                               | #2: 120*65*100cm   |
| Conveyor Speed                | 0.4 m/s forward or backward  |
| Conveyor height               | 669 mm   |
| Conveyor capacity             | 150 kg   |
| Frame design                  | 304 stainless steel, 2-5 mm cold rolled plate and square steel, double-layer staggered lead impregnated safety curtain |
| X ray dose/inspection         | ≤4.8μSv  |
| X ray leakage                 | ≤1μSv/h at any point 5 cm outside the external surface. FDA standard is ≤5μSv/h  |
| Steel penetration             | 41 mm guaranteed   |
| Wire Resolution               | Horizontal AWG40 / Vertical AWG40 guaranteed   |
| Spatial resolution            | Horizontal view: 0.8mm Horizontal / Vertical Upward view: 0.8mm Horizontal / Vertical                                  |
| Power Consumption             | max. 1KW   |
| Noise                         | <60 dB   |
| Film Safety                   | Guarantee ASA/ISO1600 Film   |

#### X-ray Generator (Two)

|                      |                                       |
|----------------------|---------------------------------------|
| Anode Voltage        | 180 KV                                |
| Beam direction       | Vertical and Horizontal               |
| Cooling / Duty Cycle | Sealed oil cooling /100%              |
| Computer and other   |                                       |
| Monitor              | Two 21.5-inch LCD monitors, 1920*1080 |
| Console              | One                                   |
| CPU                  | Intel (R) i3 (R) 3.3GHz               |
| RAM                  | 4GB                                   |
| Hard Disk            | 2T                                    |
| Keyboard             | Special designed                      |
| Platform             | Windows 10                            |
| Electric roller      | Three-phase                           |

| Imaging System                   |  |
|----------------------------------|--|
| Detector                         | 2560 channels in two L-Shaped Arrays   |
| Image processing                 | Color / black and white imaging, organic highlight, inorganic highlight, pseudo color, edge enhancement, suspicious organic enhancement, super enhancement, reverse/invert color, grayscale scanning, brighten, darken, variable absorption rate + / -, zoom in / out, maximum 64x, etc. |
| Explosives & Narcotics Detection | Suspicious organics highlight(atomic number Zeff=7,8,9)  |
| Suspecious Alarm                 | Alarm and box line the suspicious objects including hard to penetrate material, explosives and drugs   |
| Threat Image Projection(TIP)     | Inserting fictional, but realistic images of threat items into baggage during screening operation, for maintenance of vigilance, as well as training and assessment of image identification capability   |
| Image pullback                   | Image pullback   |
| Image Archive                    | Up to 50,000 images stored automatically, enable transferring to USB disk, and converting to JPG, BMP and other formats  |
| Miscellaneous Functions          | Time/date display, counters, user management, system-on/x-ray-on timers, power on self test, built-in diagnostic facilities, bidirection scanning, forced scanning, image search and export, system setting, system log, system standby and stimulant training,etc.                      |
| Options                          | UPS, additional roller table, inteligent roller to sense the bag and move the belt, AI function to identify knives, guns, bullets, fireworks, etc  |
| Operating Environment            |  |
| Ops temperature                  | 5oC-40oC   |
| /Humidity                        | 0%-90%(non-condensing)   |
| Storage Temperature              | -20oC to 60oC  |
| /Humidity                        | 10%-90%(non-condensing)  |
| Operation Power                  | 220V(+10% ~ -15%) 50±3Hz<br>Options: 110-120V, 230-240V, 60Hz  |
| Compliance                       |  |
| International                    | * ISO19001 ; ISO14001 ; ISO45001 ;<br>* CE RoHS<br>* FDA FCC   |

## Dimensions

