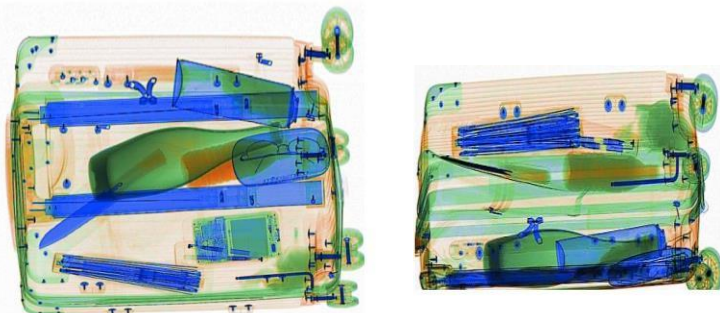




Product highlights

- * Dual view technology with images from two angles
- * Radiation safe
- * High resolution, high penetration and good image quality
- * Multilingual operation
- * Automatic built in test and self diagnosis
- * High load-bearing capacity
- * Threat alert and material classification
- * Energy saving design
- * One key turn off with patent
- * Drugs and explosives detection.



General specifications

Physical Specifications

Tunnel size	660(W)*501(H) mm
660(W)*501(H) mm	740 kg
Unit size	2456(L)*1348(W)*1331(H) mm
after packed on wooden pallet	Gross weight: 900 Packing size: #1: 262*147*156cm #2: 120*65*100cm
Conveyor Speed	0.4 m/s forward or backward
Conveyor height	669 mm
Conveyor capacity	150 kg
Frame design	304 stainless steel, 2-5 mm cold rolled plate and square steel, double-layer staggered lead impregnated safety curtain
X ray dose/inspection	≤4.8μSv
X ray leakage	≤1μSv/h at any point 5 cm outside the external surface. FDA standard is ≤5μSv/h
Steel penetration	41 mm guaranteed
Wire Resolution	Horizontal AWG40 / Vertical AWG40 guaranteed
Spatial resolution	Horizontal view: 0.8mm Horizontal / Vertical Upward view: 0.8mm Horizontal / Vertical
Power Consumption	max. 1KW
Noise	<60 dB
Film Safety	Guarantee ASA/ISO1600 Film
X-ray Generator (Two)	
Anode Voltage	180 KV
Beam direction	Vertical and Horizontal
Cooling / Duty Cycle	Sealed oil cooling /100%
Computer and other	
Monitor	Two 21.5-inch LCD monitors, 1920*1080
Console	One
CPU	Intel (R) i3 (R) 3.3GHz
RAM	4GB
Hard Disk	2T
Keyboard	Special designed
Platform	Windows 10
Electric roller	Three-phase



Imaging System	
Detector	2560 channels in two L-Shaped Arrays
Image processing	Color / black and white imaging, organic highlight, inorganic highlight, pseudo color, edge enhancement, suspicious organic enhancement, super enhancement, reverse/invert color, grayscale scanning, brighten, darken, variable absorption rate + / -, zoom in / out, maximum 64x, etc.
Explosives & Narcotics Detection	Suspicious organics highlight(atomic number Zeff=7,8,9)
Suspecious Alarm	Alarm and box line the suspicious objects including hard to penetrate material, explosives and drugs
Threat Image Projection(TIP)	Inserting fictional, but realistic images of threat items into baggage during screening operation, for maintenance of vigilance, as well as training and assessment of image identification capability
Image pullback	Image pullback
Image Archive	Up to 50,000 images stored automatically, enable transferring to USB disk, and converting to JPG, BMP and other formats
Miscellaneous Functions	Time/date display, counters, user management, system-on/x-ray-on timers, power on self test, built-in diagnostic facilities, bidirection scanning, forced scanning, image search and export, system setting, system log, system standby and stimulant training,etc.
Options	UPS, additional roller table, intelligent roller to sense the bag and move the belt, AI function to identify knives, guns, bullets, fireworks, etc
Operating Environment	
Ops temperature	5oC-40oC
/Humidity	0%-90%(non-condensing)
Storage Temperature	-20oC to 60oC
/Humidity	10%-90%(non-condensing)
Operation Power	220V(+10% ~ -15%) 50±3Hz Options: 110-120V, 230-240V, 60Hz
Compliance	
International	* ISO19001 ; ISO14001 ; ISO45001 ; * CE RoHS * FDA FCC

Dimensions

