



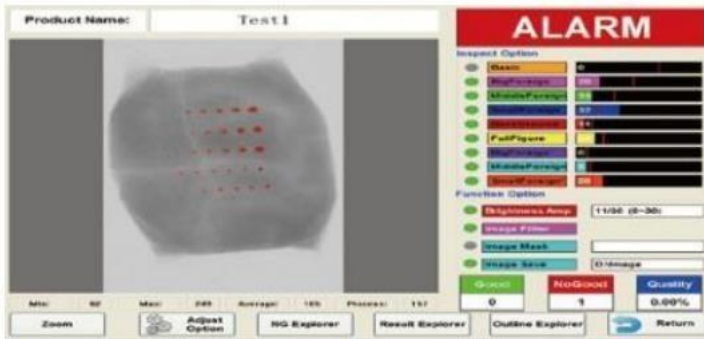
General specifications

PHYSICAL SPECIFICATIONS	
Best Inspection Ability	0.3mm Sus Ball 0.3*2mm Sus Wire 1.0mm Ceramic Ball 1.0mm Glass Ball
X-ray tube	MAX.300W/75kV
Max Detecting Height	150mm
Max Detecting Width	280mm
Conveyor Parameter	Speed: 5-60m/min Width: 300mm Max Height: 150mm
Height from Floor to Belt	750+100mm
Loading Capacity	5 kg
Screen	Full-color TFT 15" Touch Screen
O/S	Windows 10
Connectivity	LAN port, USB port
Product Management	Complete product log
Parameter Adjustment	Auto learning/Manual setting
Image Management	Auto image save/print/analyses
Power Supply	220V, AC, 50/60Hz
Body Material	SUS304
Purification	Easy to wash
Cooling method	Air conditioned cooling
Operation Condition	Temperature 0-40°C Humidity 30-90%
X-ray emissions	< 1microsievert per hour
X-ray protection	Protective curtain
Rejector System	Tower light & Buzzer ; Conveyor Stop
IP Rating	IP66
Finishing	Brushed SUS 304



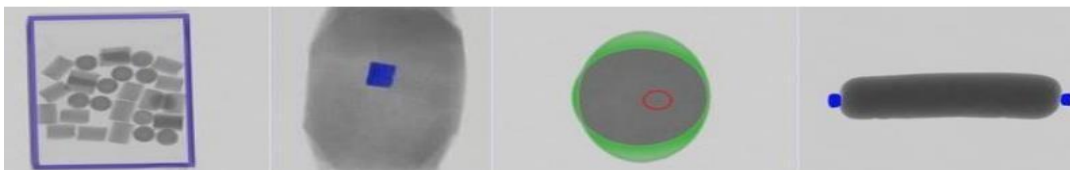
Product highlights

X-ray Inspection System can be used to detect contaminants such as all types of metal, glass, ceramic etc. in metal film/Aluminium pouches.



*Remarks:

The technical parameter above namely is the result of sensitivity by inspecting only the test sample on the belt. The sensitivity would be affected according to the products being inspected.



Dimensions

