

General specifications



PHYSICAL SPECIFICATIONS	
Best Inspection Ability	0.3*0.3*0.3mm(SUS304 ball) 0.2*2mm(SUS wire) 1.0 mm (Glass Ball) 1.0 mm(Ceramic)
X-ray tube	MAX. 350 W/ 80kV (Beryllium Window)
Detector	0.1mm TDI Detector
Max Detecting Height	160mm
Max Detecting Width	400mm
Conveyor Speed	10-60m/min
Conveyor Height	750+100 mm
Working Direction	From left to right
Screen	Full-color TFT 15" Touch Screen
O/S	Windows 10
Connectivity	LAN port, USB port
Product Management	Complete product log
Parameter Adjustment	Auto learning/Manual setting
Image Management	Auto image save/print/analyses
Power Supply	220V, 50/60Hz , 1 Phase
Body Material	SUS304 (Matt Finishing)
Purification	Easy to wash
Cooling method	air/water heat exchangers
IP Rating	IP66
Operation temperature	0-40°C
Operation humidity	30-90%
X-ray emissions	< 1microsievert per hour
X-ray protection	Protective curtain



Remarks:

The technical parameter above namely is the result of sensitivity by inspecting only the test sample on the belt. The sensitivity would be affected according to the products being inspected.

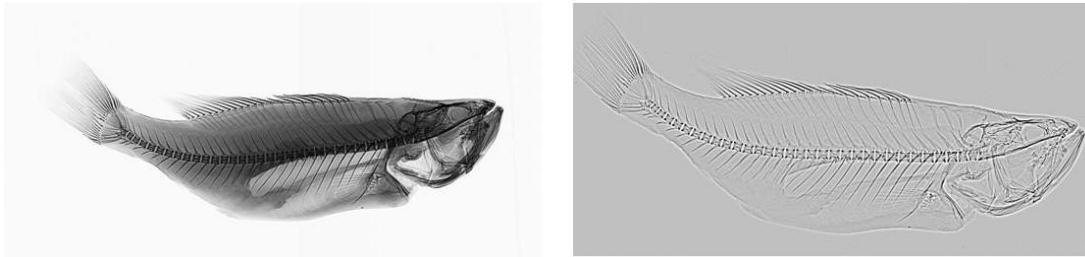
X-Ray Inspection System for Fish Bones

- Auto recognition & Auto rejection: It adapts to the speed of the deboning staff without the need for manual intervention
- Suitable for foreign contaminant and fish bone detection in fish meat, applicable to products such as basa, halibut, salmon, and cod.
- Not only can it detect foreign contaminants in fish meat, but it can also be paired with an external high-definition display screen to clearly display various types of fish bones in cod, salmon, and other fish, helping manual removal of fish bones accurately.
- Various detectors such as 0.4 TDI detector, 0.1 TDI detector, 0.048 TDI detector and photon counting detectors
- Waterproof & Quick release: Equipped with quick-release functionality and an IP66 waterproof rating, allowing for quick disassembly and easy cleaning
- AI detection algorithm can more accurately identify and mark tiny fish bones
- High throughput: 6-7 tons per hour.

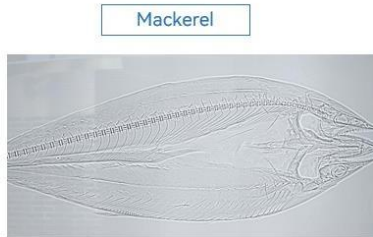
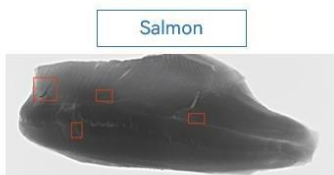


Performance

Fish bone machine inspection imaging effect.

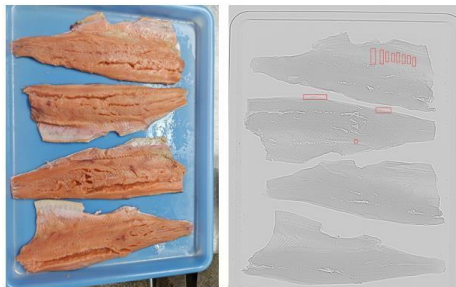


Fin rays, fin spines, ribs, etc. are clearly presented



Cases

Mackerel
Detector: photon counting detector



Salmon
Detector: 0.048 TDI detector

