

### General specifications



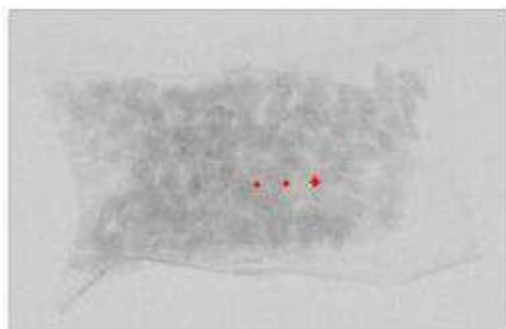
#### PHYSICAL SPECIFICATIONS

X-Ray Tube	210W/ 350W Optional
Inspection Width	650mm
Inspection Height	500mm
Best Inspection Sensitivity	Stainless Steel Ball $\Phi$ 0.5mm Glass/Ceramic Ball $\Phi$ 1.5mm
Conveyor Speed	10-40m/min
Maximum carton size that can be inspected	<b>1200x650x500mm (LxWxH)</b>
Max load	160kg
X-Ray Leakage	<1 $\mu$ Sv/h (CE Standard)
IP Rate	IP66 (Under Belt)/ IP69K
Working Environment	Temperature: -5~40C Humidity: 40-60%, No Dew
Cooling Method	Industrial Fan
Rejecter Mode	Sound and Light Alarm, Belt Stops (Rejecter Optional)
Air Pressure	0.8Mpa
Power Supply	1.5kW
Surface Treatment	Carbon Steel



### Product highlights

- Specialized for the inspection of large size packages like big bags, cartons, boxes, thermoform trays and multipack containers, etc.
- Maximum carton size that can be inspected: **1200x650x500mm(LxWxH)**
- Movable touch screen
- Special structure design for big package (carton, box, bag), high price-performance ratio
- Best solution for metal contaminant inspection in big aluminum packages
- Metal component counting function in garments, shoes and bags
- Detect foreign objects in large products such as garments, shoes, handbags with metal accessories and food, agricultural products packaged in aluminum foil.



Matrixcope LLC (USA)



sales@matrixcope.com



www.matrixcope.com

## Images

### Product packaging:



## Dimensions

