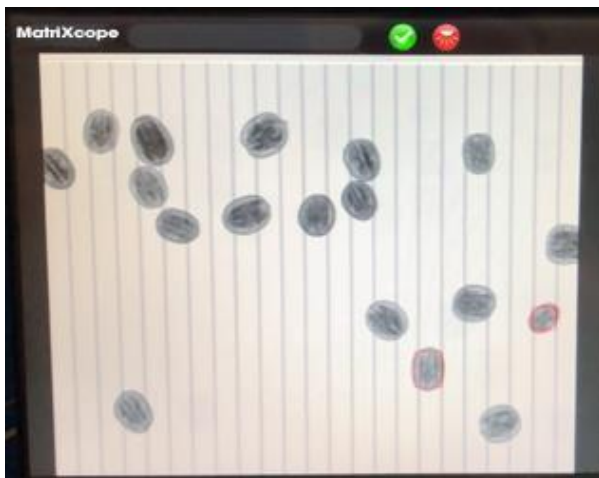




Remarks:

The technical parameter above namely is the result of sensitivity by inspecting only the test sample on the belt. The sensitivity would be affected according to the products being inspected and working condition.



General specifications

PHYSICAL SPECIFICATIONS

Best Inspection Ability	0.2*0.2*0.2mm(SUS304 ball) 0.3*2mm(SUS wire) 0.8mm (Glass Ball) 0.8 mm(Ceramic) 1.5-2.0 mm (bone, gravel)
X-ray tube	MAX.500W/80kV (Beryllium widnow)
Detector	0.4mm TDI Detector
Tunnel Height	100mm
Tunnel Width	800mm
Conveyor Speed	Max 120m/min
Estimated Max Capacity	3-4 tons per hour
Conveyor Height	900+100 mm
Working Direction	From left to right
Screen	Full-color TFT 15" Touch Screen
O/S	Windows 7/10
Connectivity	LAN port, USB port
Product Management	Complete product log
Parameter Adjustment	Auto learning/Manual setting
Image Management	Auto image save/print/analyses
Power Supply	220V, AC, 50/60Hz
Body Material	SUS304
Purification	Easy to wash
Cooling method	Air conditioned cooling
Operation temperature	0-40°C
Operation humidity	30-90%
X-ray emissions	< 1microsievert per hour
X-ray protection	Lead/Lead-free protective curtain
Rejector	96 tunnel air jet rejector

