



General specifications

PHYSICAL SPECIFICATIONS	
X-RAY	MAX. 80kV, 350W (Beryllium window)
Conveyor Parameter	Speed: Max 24m/min
	Width: 200mm
	Height: 100mm
Best Inspection Ability	φ0.1*2mm (Fish Bone)
	φ0.1mm (SUS304 ball)
	φ0.1*2mm (SUS304 wire)
Detecting Camera	TDI Camera
Working Direction	From right to left only
Screen	Full-color TFT 15" Touch Screen
O/S	Window 7
Power Supply	AC220V
Connectivity	LAN port, USB port
Product Management	Complete product log
Parameter Adjustment	Auto learning/Manual setting
Image Management	Auto image save/print/analyses
Body Material	Sus304
Purification	Easy to wash
Cooling method	Air conditioned cooling
X-ray emissions	< 1microsievert per hour
X-ray protection	Lead-free protective curtain
Rejector	Alarm and belt stop

Remarks:

The technical parameter above namely is the result of sensitivity by inspecting only the test sample on the belt. The sensitivity would be affected according to the products being inspected and working condition.

X-Ray Inspection System for Fish Bones

- Auto recognition & Auto rejection: It adapts to the speed of the deboning staff without the need for manual intervention
- Suitable for foreign contaminant and fish bone detection in fish meat, applicable to products such as basa, halibut, salmon, and cod.
- Not only can it detect foreign contaminants in fish meat, but it can also be paired with an external high-definition display screen to clearly display various types of fish bones in cod, salmon, and other fish, helping manual removal of fish bones accurately.
- 4K HD Screen
- Waterproof & Quick release: Equipped with quick-release functionality and an IP66 waterproof rating, allowing for quick disassembly and easy cleaning
- AI detection algorithm can more accurately identify and mark tiny fish bones
- High throughput: 6-7 tons per hour.

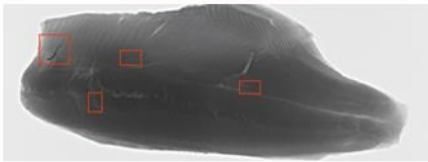
Performance

Fish bone machine inspection imaging effect.

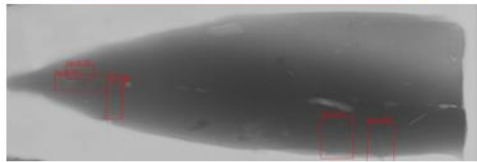


Fin rays, fin spines, ribs, etc. are clearly presented

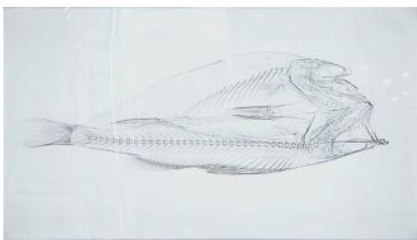
Salmon



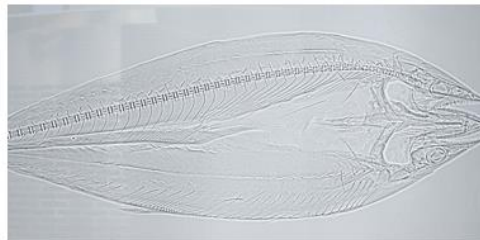
Spanish mackerel



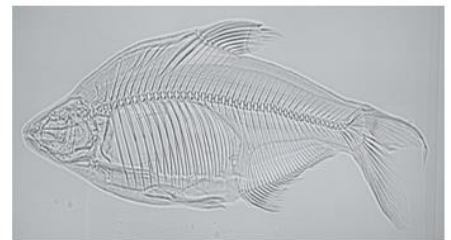
Sea bass



Mackerel



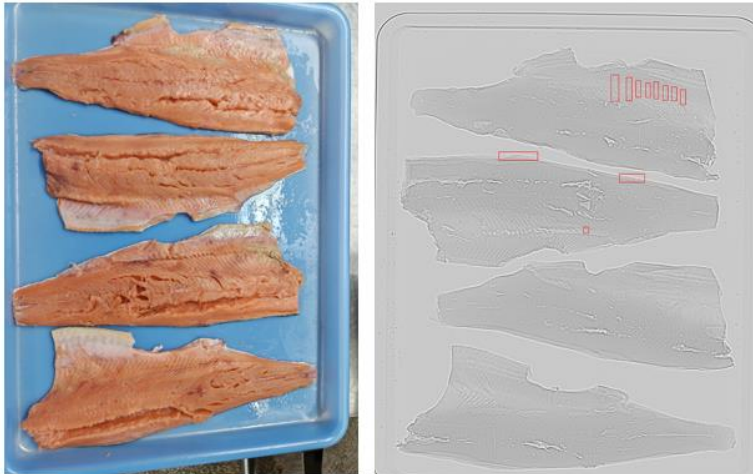
Wuchang fish



Cases

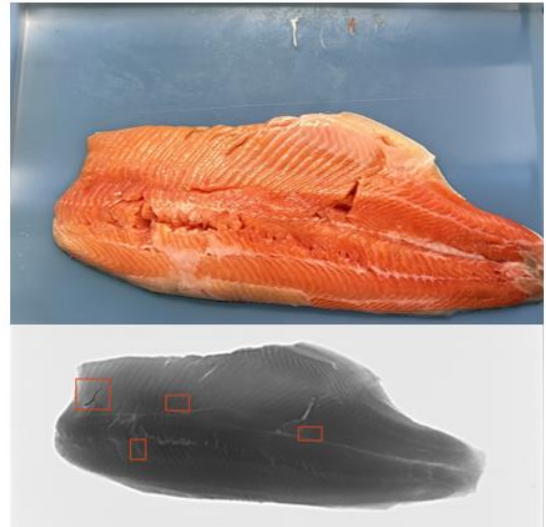
Mackerel

Detector: photon counting detector



Salmon

Detector: 0.048 TDI detector



Images

