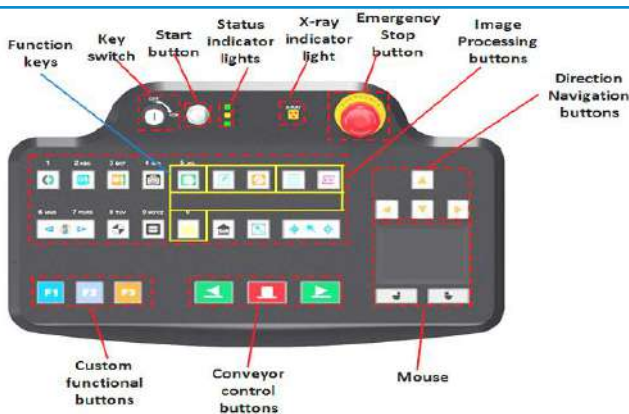




KEYBOARD PRODUCT HIGHLIGHTS

- * Dual view technology with images from two angles
- * Radiation safe
- * High resolution, high penetration and good image quality
- * Multilingual operation
- * Automatic built in test and self diagnosis
- * High load-bearing capacity
- * Threat alert and material classification
- * Energy saving design
- * One key turn off with patent
- * Drugs and explosives detection

IMAGING SYSTEM

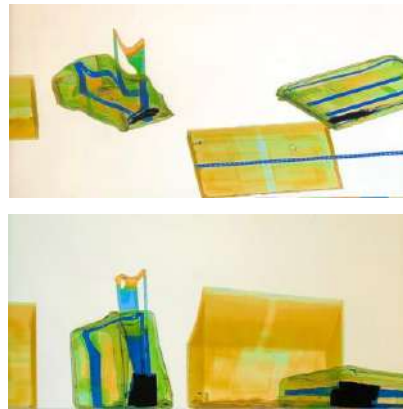


GENERAL SPECIFICATIONS

Physical specifications	
Tunnel size	1505(W)*1800(H) mm
Unit weight	4000 kg
Unit size	7787(L)*2423(W)*2837(H)mm
Gross weight	4500 kg
Packing size	#1: 515*252*300cm, #2: 176*171*53cm, #3: 176*171*53cm, #4: 120*65*100cm
General Specifications	
Conveyor Speed	0.4 m/s forward or backward
Conveyor height	350 mm
Conveyor capacity	2000 kg
Frame design	304 stainless steel, 2-5 mm cold rolled plate and square steel, double-layer staggered lead impregnated safety curtain
X ray dose/inspection	≤4.8μSv
X ray leakage	≤1μSv/h at any point 5 cm outside the external surface. FDA standard is ≤5μSv/h
Steel penetration	39 mm
Wire Resolution	AWG36
Penetration Resolution	AWG30
Spatial resolution	1.3mm Horizontal, 1.3mm Vertical
Power Consumption	max. 2.5KW
Noise	<60 dB
Film Safety	Guarantee ASA/ISO1600 Film
X-ray Generator (Two)	
Anode Voltage	Options: 160KV, 180KV, 200KV
Beam direction	Vertical and Horizontal
Cooling / Duty Cycle	Sealed oil cooling /100%
Operating Environment	
Ops temperature/Humidity	5oC-40oC 0%-90%(non-condensing)
Storage Temperature/Humidity	-20oC to 60oC 10%-90%(non-condensing)
Operation Power	220V(+10% ~ -15%) 50±3Hz Options: 110-120V, 230-240V, 60Hz

Configuration	
X ray generator	200KV, oil cooling
Electric roller	SEW, Three-phase
Computer	Intel (R) i3 (R) 3.3GHz. RAM 4GB, Hard Disk: 1T
Monitor	Two 21.5-inch LCD monitors, 1920*1080
Platform	Windows 10

IMAGING



Imaging System

Detector	7168 channels in an L-Shaped Array
Image processing	Color / black and white imaging, local enhancement, high penetration, low penetration, super enhancement, organic stripping, inorganic stripping, reverse color, brightening, darkening, gray level scan/variable density, continuously zoom maximum 64x, pseudo color imaging, organics enhancement, suspicious item alarm and notation, edge enhancement imaging, etc.
Explosives & Narcotics Detection	Suspicious organics highlight(atomic number Zeff=7,8,9)
Suspicious Alarm	Alarm and box line the suspicious objects including hard to penetrate material, explosives and drugs
Threat Image Projection(TIP)	Inserting fictional, but realistic images of threat items into baggage during screening operation, for maintenance of vigilance, as well as training and assessment of image identification capability
Image pullback	30 images
Image Archive	Up to 50,000 images stored automatically, enable transferring to USB disk, and converting to JPG, BMP and other formats
Miscellaneous Functions	Time/date display, counters, user management, system-on/x-ray-on timers, power on self test, built-in diagnostic facilities, bidirection scanning, forced scanning, image search and export, system setting, system log, system standby and stimulant training, etc.
Options	UPS, additional roller, remote work station, network integration, video monitoring, etc.

DIMENSIONS

