



Product Highlights

- * Radiation safe
- * High resolution, high penetration and good image quality
- * Multilingual operation
- * Automatic built in test and self diagnosis
- * Super strong load-bearing capacity
- * Threat alert and material classification
- * Energy saving design
- * One key turn off with patent
- * Drugs and explosives detection

OPERATING ENVIRONMENT

| | |
|-------------------------------|---------------------------------------------------------------|
| Ops temperature /Humidity | 5 oC-40oC 0%-90%(non-condensing) |
| Storage Temperature /Humidity | 20oC to 60oC 10%-90%(non-condensing) |
| Operation Power | 220V(+10% ~ -15%) 50±3Hz Options: 110-120V, 230-240V, 60Hz |

COMPUTER AND OTHER

| | |
|-----------|---------------------------------------|
| Monitor | Two 21.5-inch LCD monitors, 1920*1080 |
| CPU | Intel (R) i3 (R) 3.3GHz |
| RAM | 4GB |
| Hard Disk | 1T |
| Platform | Windows 10 |

General specifications

PHYSICAL SPECIFICATIONS

| | |
|--------------|-------------------------------------------------------------------------------|
| Tunnel size | 1505(W)*1800(H) mm |
| Unit weight | 3100 kg |
| Unit size | 7127(L)*2422(W)*2338(H) mm |
| Gross weight | 3500 kg |
| Packing size | #1: 463*273*240cm #2: 176*171*53cm #3: 176*171*53cm #4: 120*65*100cm |

GENERAL SPECIFICATIONS

| | |
|------------------------|------------------------------------------------------------------------------------------------------------------------|
| Conveyor Speed | 0.22 m/s forward or backward |
| Conveyor height | 350 mm |
| Conveyor capacity | 2000 kg |
| Frame design | 304 stainless steel, 2-5 mm cold rolled plate and square steel, double-layer staggered lead impregnated safety curtain |
| X ray dose/inspection | ≤4.5μSv |
| X ray leakage | ≤1μSv/h at any point 5 cm outside the external surface. FDA standard is ≤5μSv/h |
| Steel penetration | 30/38/43 mm |
| Wire Resolution | AWG38 |
| Penetration Resolution | AWG32 |
| Spatial resolution | 1.3mm Horizontal, 1.3mm Vertical |
| Power Consumption | max. 2KW |
| Noise | <60 dB |
| Film Safety | Guarantee ASA/ISO1600 Film |

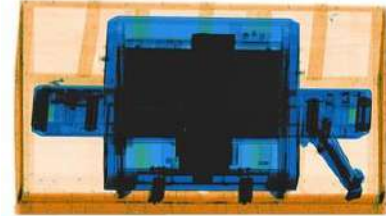
X-RAY GENERATOR (SINGLE)

| | |
|----------------------|------------------------------|
| Anode Voltage | Options: 160KV, 180KV, 200KV |
| Beam direction | Horizontal |
| Cooling / Duty Cycle | Sealed oil cooling /100% |

IMAGING SYSTEM

| | |
|----------------------------------|--------------------------------------------------------------------------------------------------------------------------------------------------------------------------------------------------------------------------------------------------------------------------------------------------------------------------------------------------------------------------|
| Detector | 3712 channels in an L-Shaped Array |
| Image processing | Color / black and white imaging, local enhancement, high penetration, low penetration, super enhancement, organic stripping, inorganic stripping, reverse color, brightening, darkening, gray level scan/variable density, continuously zoom maximum 64x, pseudo color imaging, organics enhancement, suspicious item alarm and notation, edge enhancement imaging, etc. |
| Explosives & Narcotics Detection | Suspicious organics highlight(atomic number Zeff=7,8,9) |
| Suspecious Alarm | Alarm and box line the suspicious objects including hard to penetrate material, explosives and drugs |
| Threat Image Projection(TIP) | Inserting fictional, but realistic images of threat items into baggage during screening operation, for maintenance of vigilance, as well as training and assessment of image identification capability |
| Image pullback | 30 images |
| Image Archive | Up to 50,000 images stored automatically, enable transferring to USB disk, and converting to JPG, BMP and other formats |
| Miscellaneous Functions | Time/date display, counters, user management, system-on/x-ray-on timers, power on self test, built-in diagnostic facilities, bidirection scanning, forced scanning, image search and export, system setting, system log, system standby and stimulant training,etc. |

IMAGING



DIMENSIONS

