



Product highlights

- * Dual view technology with images from two angles
- * Radiation safe
- * High resolution, high penetration and good image quality
- * Multilingual operation
- * Automatic built in test and self diagnosis
- * High load-bearing capacity
- * Threat alert and material classification
- * Energy saving design
- * One key turn off with patent
- * Drugs and explosives detection

General specifications

Physical Specifications

| | |
|---|---------------------------------------|
| Tunnel size | 660(W)*502(H) mm |
| Unit weight | 740 kg |
| Unit size after packed on wooden pallet - | 4546(L)*1280(W)*1336(H) mm |
| Gross weight | 900 |
| Packing size | #1: 262*147*156cm #2: 120*65*100cm |

General Specifications

| | |
|------------------------|--|
| Conveyor Speed | 0.4 m/s forward or backward |
| Conveyor height | 668 mm |
| Conveyor capacity | 150 kg |
| Frame design | 304 stainless steel, 2-5 mm cold rolled plate and square steel, double-layer staggered lead impregnated safety curtain |
| X ray dose/inspection | ≤4.8μSv |
| X ray leakage | ≤1μSv/h at any point 5 cm outside the external surface. FDA standard is ≤5μSv/h |
| Steel penetration | 41 mm guaranteed |
| Wire Resolution | Horizontal AWG38 / Vertical AWG36 guaranteed |
| Penetration Resolution | AWG32 guaranteed |
| Spatial resolution | Horizontal view: 1.3mm Horizontal / Vertical Upward view: 1.0mm Horizontal / Vertical |
| Power Consumption | max. 1KW |
| Noise | <60 dB |
| Film Safety | Guarantee ASA/ISO1600 Film |

X-RAY GENERATOR (TWO)

| | |
|----------------------|--------------------------|
| Anode Voltage | 160 KV |
| Ray direction | Vertical and Horizontal |
| Cooling / Duty Cycle | Sealed oil cooling /100% |



| Imaging System | |
|----------------------------------|--|
| Detector | 2560 channels in an L-Shaped Array |
| Image processing | Color / black and white imaging, local enhancement, high penetration, low penetration, super enhancement, organic stripping, inorganic stripping, reverse color, brightening, darkening, gray level scan/variable density, continuously zoom maximum 64x, pseudo color imaging, organics enhancement, suspicious item alarm and notation, edge enhancement imaging, etc. |
| Explosives & Narcotics Detection | Suspicious organics highlight(atomic number Zeff=7,8,9) |
| Suspicious Alarm | Alarm and box line the suspicious objects including hard to penetrate material, explosives and drugs |
| Threat Image Projection(TIP) | Inserting fictional, but realistic images of threat items into baggage during screening operation, for maintenance of vigilance, as well as training and assessment of image identification capability |
| Image pullback | 30 images |
| Image Archive | Up to 50,000 images stored automatically, enable transferring to USB disk, and converting to JPG, BMP and other formats |
| Miscellaneous Functions | Time/date display, counters, user management, system-on/x-ray-on timers, power on self test, built-in diagnostic facilities, bidirection scanning, forced scanning, image search and export, system setting, system log, system standby and stimulant training, etc. |
| Options | UPS, additional roller, remote work station, network integration, video monitoring, etc. |

OPERATING ENIRIONMENT

| | |
|--------------------------------|---|
| Operation temperature/Humidity | 5°C-40°C / 0%-90%(non-condensing) |
| Storage Temperature/Humidity | -20°Cto 60°C / 10%-90%(non-condensing) |
| Operation Power | 220VAC(±10%) 50±3Hz (Options: 110-130V, 200-240V, 60Hz) |
| Stabilizer and UPS | Optional |

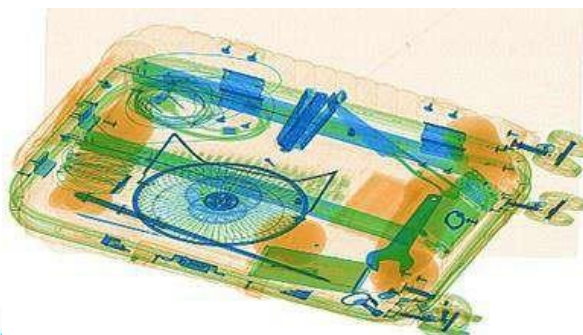
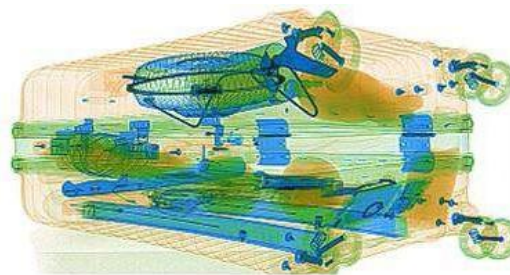
COMPUTER AND OTHER

| | |
|-----------------|--|
| Monitor | One 21.5-inch LCD monitor, 1920*1080, one console desk |
| Console | One console with lock |
| CPU | Intel (R) i3 (R) 3.3GHz |
| RAM | 4GB |
| Hard Disk | 1T |
| Keyboard | Special designed |
| System | Windows 10 |
| Electric roller | Three-phase |

COMPLIANCE

| | |
|---------------|--|
| International | * ISO19001; ISO14001; ISO45001 * CE RoHS * FDA FCC |
|---------------|--|

Imaging



Dimensions

