

General specifications



Product highlights

- * Dual view technology with images from two angles
- * Radiation safe
- * High resolution, high penetration and good image quality
- * Multilingual operation
- * Automatic built in test and self diagnosis
- * High load-bearing capacity
- * Threat alert and material classification
- * Energy saving design
- * One key turn off with patent
- * Drugs and explosives detection

Physical Specifications

Tunnel size	660(W)*502(H) mm
Unit weight	740 kg
Unit size after packed on wooden pallet -	4546(L)*1280(W)*1336(H) mm
Gross weight	900
Packing size	#1: 262*147*156cm #2: 120*65*100cm

General Specifications

Conveyor Speed	0.4 m/s forward or backward
Conveyor height	668 mm
Conveyor capacity	150 kg
Frame design	304 stainless steel, 2-5 mm cold rolled plate and square steel, double-layer staggered lead impregnated safety curtain
X ray dose/inspection	≤4.8μSv
X ray leakage	≤1μSv/h at any point 5 cm outside the external surface. FDA standard is ≤5μSv/h
Steel penetration	41 mm guaranteed
Wire Resolution	Horizontal AWG38 / Vertical AWG36 guaranteed
Penetration Resolution	AWG32 guaranteed
Spatial resolution	Horizontal view: 1.3mm Horizontal / Vertical Upward view: 1.0mm Horizontal / Vertical
Power Consumption	max. 1KW
Noise	<60 dB
Film Safety	Guarantee ASA/ISO1600 Film

X-RAY GENERATOR (TWO)

Anode Voltage	160 KV
Ray direction	Vertical and Horizontal
Cooling / Duty Cycle	Sealed oil cooling /100%

Imaging System	
Detector	2560 channels in an L-Shaped Array
Image processing	Color / black and white imaging, local enhancement, high penetration, low penetration, super enhancement, organic stripping, inorganic stripping, reverse color, brightening, darkening, gray level scan/variable density, continuously zoom maximum 64x, pseudo color imaging, organics enhancement, suspicious item alarm and notation, edge enhancement imaging, etc.
Explosives & Narcotics Detection	Suspicious organics highlight(atomic number Zeff=7,8,9)
Suspicious Alarm	Alarm and box line the suspicious objects including hard to penetrate material, explosives and drugs
Threat Image Projection(TIP)	Inserting fictional, but realistic images of threat items into baggage during screening operation, for maintenance of vigilance, as well as training and assessment of image identification capability
Image pullback	30 images
Image Archive	Up to 50,000 images stored automatically, enable transferring to USB disk, and converting to JPG, BMP and other formats
Miscellaneous Functions	Time/date display, counters, user management, system-on/x-ray-on timers, power on self test, built-in diagnostic facilities, bidirection scanning, forced scanning, image search and export, system setting, system log, system standby and stimulant training,etc.
Options	UPS, additional roller, remote work station, network integration, video monitoring, etc.

OPERATING ENIRIONMENT

Operation temperature/Humidity	5°C-40°C / 0%-90%(non-condensing)
Storage Temperature/Humidity	-20°Cto 60°C / 10%-90%(non-condensing)
Operation Power	220VAC(±10%) 50±3Hz (Options: 110-130V, 200-240V, 60Hz)
Stabilizer and UPS	Optional

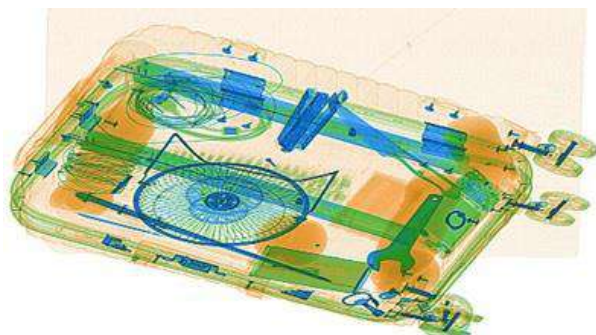
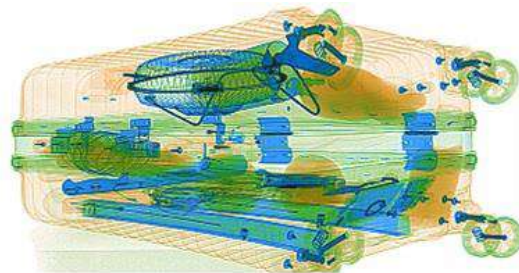
COMPUTER AND OTHER

Monitor	One 21.5-inch LCD monitor, 1920*1080, one console desk
Console	One console with lock
CPU	Intel (R) i3 (R) 3.3GHz
RAM	4GB
Hard Disk	1T
Keyboard	Special designed
System	Windows 10
Electric roller	Three-phase

COMPLIANCE

International	* ISO19001; ISO14001; ISO45001 * CE RoHS * FDA FCC
---------------	--

Imaging



Dimensions

