



GENERAL SPECIFICATIONS

Physical specifications	
Tunnel size	613(W)*409.5(H) mm
Unit weight	455 kg
Unit size	2007(L)*844(W)*1234(H) mm
after packed on wooden pallet -	
Gross weight	500 kg
Packing size	220*101*156cm
General Specifications	
Conveyor Speed	0.4 m/s forward or backward
Conveyor height	663.5 mm
Conveyor capacity	150 kg
Frame design	304 stainless steel, 2-5 mm cold rolled plate and square steel, double-layer staggered lead impregnated safety curtain
X ray dose/inspection	≤4μSv
X ray leakage	≤1μSv/h at any point 5 cm outside the external surface. FDA standard is ≤5μSv/h
Steel penetration	39 mm guaranteed
Wire Resolution	AWG40 guaranteed
Penetration Resolution	AWG34 guaranteed
Spatial resolution	1.0mm Horizontal, 1.0mm Vertical
Power Consumption	max. 0.8KW
Noise	<60 dB
Film Safety	Guarantee ASA/ISO1600 Film



KEYBOARD PRODUCT HIGHLIGHTS

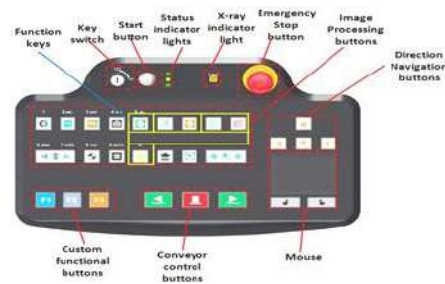
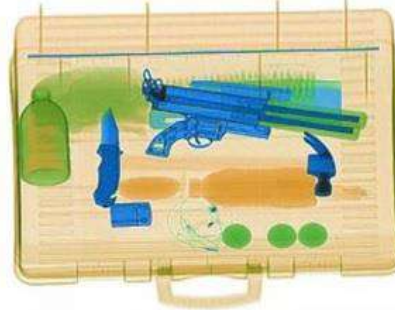
- * Radiation safe
- * High resolution, high penetration and good image quality
- * Multilingual operation
- * Automatic built in test and self diagnosis
- * Threat alert and material classification
- * Energy saving design
- * One key turn off with patent
- * Drugs and explosives detection

X-ray Generator (single)

Anode Voltage	140 KV
Beam direction	Upword
Cooling / Duty Cycle	Sealed oil cooling /100%

Computer and other	
Ops temperature/Humidity	5oC-40oC 0%-90%(non-condensing)
Storage Temperature /Humidity	-20oC to 60oC 10%-90%(non-condensing)
Operation Power	220V(+10% ~ -15%) 50±3Hz Options: 110-120V, 230-240V, 60Hz
Computer and other	
Monitor	One 21.5-inch LCD monitor, 1920*1080
Console	None
CPU	Intel (R) i3 (R) 3.3GHz
RAM	4GB
Hard Disk	1T
Platform	Windows 10
Electric roller	Three-phase

IMAGING



Imaging System

Detector	1152 channels in an L-Shaped Array
Image processing	Color / black and white imaging, local enhancement, high penetration, low penetration, super enhancement, organic stripping, inorganic stripping, reverse color, brightening, darkening, gray level scan/variable density, continuously zoom maximum 64x, pseudo color imaging, organics enhancement, suspicious item alarm and notation, edge enhancement imaging, etc.
Explosives & Narcotics Detection	Suspicious organics highlight(atomic number Zeff=7,8,9)
Suspicious Alarm	Alarm and box line the suspicious objects including hard to penetrate material, explosives and drugs
Threat Image Projection(TIP)	Inserting fictional, but realistic images of threat items into baggage during screening operation, for maintenance of vigilance, as well as training and assessment of image identification capability
Image pullback	30 images
Image Archive	Up to 50,000 images stored automatically, enable transferring to USB disk, and converting to JPG, BMP and other formats
Miscellaneous Functions	Time/date display, counters, user management, system-on/x-ray-on timers, power on self test, built-in diagnostic facilities, bidirection scanning, forced scanning, image search and export, system setting, system log, system standby and stimulant training,etc.
Options	UPS, additional roller, remote work station, network integration, video monitoring, etc.

DIMENSIONS

